



Factsheet N°6: Antiretroviral Therapy (ART) and Care Services in Nepal, As of July 2013

Facts and Figures on ART in Nepal

- ✎ Anti-retroviral therapy (ART) started in Nepal in February 2004 from Teku Hospital.
- ✎ Government is providing free of cost ART service to all those in need.
- ✎ There are National ART Guidelines and Standard Operating Procedures for the clinical management of ART. The ART Guidelines were revised in 2012.
- ✎ Eligibility criteria for ART has raised to CD4 Count of 350 from 2011.
- ✎ There are 44 ART centers in Nepal.
- ✎ CD 4 count service is available at 17 sites.

Some Facts about Coverage of ART Programme in Nepal

- 📄 Among total people with advanced HIV infection who are currently receiving ART in Nepal, of which:
 - ↑ Proportion of adults: 93%
 - ↑ Proportion of children: 7%
- 📄 Among total people with advanced HIV infection who are currently receiving ART in Nepal, of which:
 - ↑ Proportion of male: 53.2%
 - ↑ Proportion of female: 46.5%
 - ↑ Proportion of third gender: 0.3%
- 📄 Percentage of people with advanced HIV infection who are alive and currently on ART after
 - 📅 12 months of treatment: 85.6%
 - 📅 24 months of treatment: 78.1%

Table 1: Facts on ART in Nepal, As of July 2013

Indicators	Value
📌 Total ART need (CD4 \leq 350), (2012):	26,100
📌 Total ART coverage (As of July 2013):	8,546
📌 Patients on the 1 st line regimen:	5,821
📌 Patients substituted on the 1 st line	2,609
📌 Patients switched on the 2 nd line	116

Figure 1: Outcomes of ART Programme in Nepal, As of July 2013

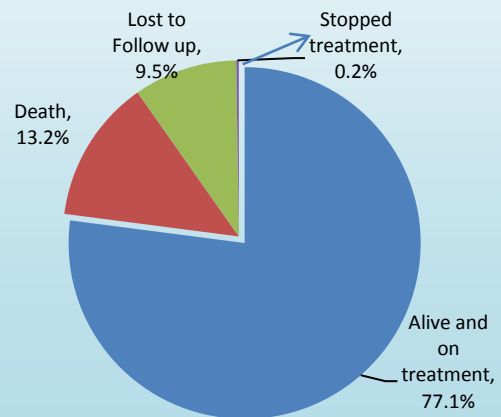
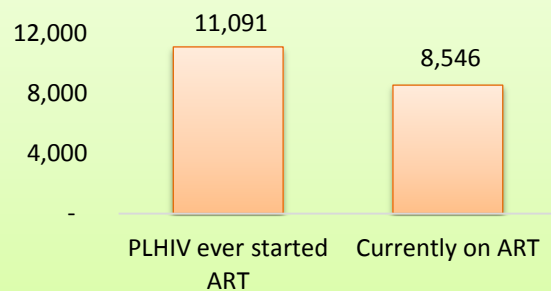


Figure 2: Cumulative Number of People with Advanced HIV Infection Ever Started and on ART, As of July 2013



For Further Information Please Contact:

National Centre for AIDS and STD Control, Teku, Kathmandu

Phone: +977 - 1 - 4261 653, 4362 753, 4258 219

Email: info@ncasc.gov.np

Fax: +977 - 1 - 4215 149

Website: www.ncasc.gov.np



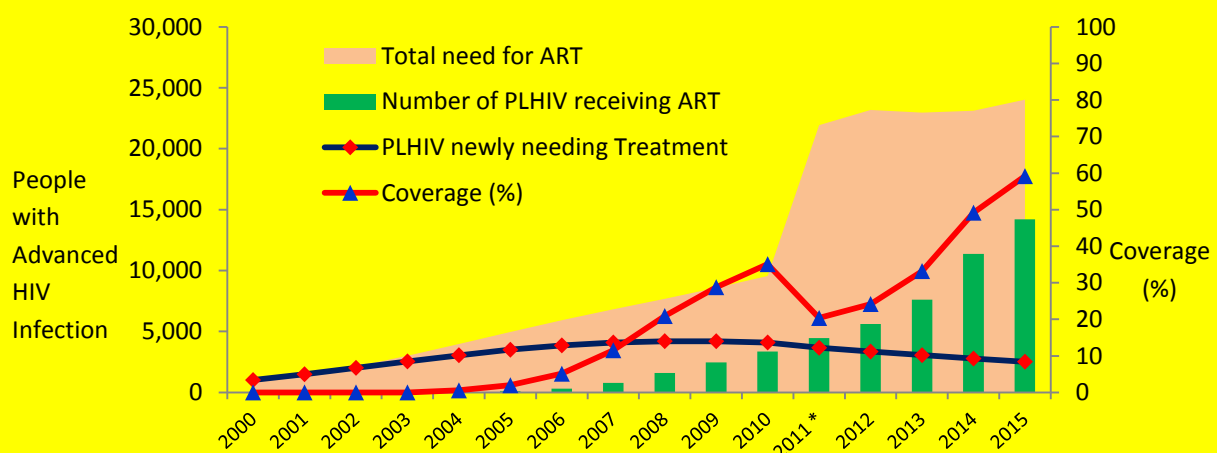
Government of Nepal
Ministry of Health and Population
National Centre for AIDS and STD Control
Teku, Kathmandu



Table 2: Trends of ART Profile of Nepal, As of July 2013

Indicators	2005/06 July	2007 July	2008 July	2009 July	2010 July	2011 July	2012 July	2013 July
People living with HIV ever enrolled on ART (cumulative)	522	1,180	2,452	3,968	5,539	7,437	9,246	11,091
People with advanced HIV infection receiving ARVs (cumulative)	522	891	1,997	3,226	4,509	5,876	7,142	8,546
People lost to follow up (cumulative)	32	54	182	293	426	647	908	1,055
People stopped treatment	3	2	5	18	11	12	11	27
Total deaths (cumulative)	36	114	276	447	653	872	1,185	1,463

Figure 3: People on Anti-Retroviral Therapy (15+Years) – Projected



Note: *Eligibility criteria for ART has raised to CD4 Count of 350 from 2011.

Source: NCASC, November, 2013

For Further Information Please Contact:

National Centre for AIDS and STD Control, Teku, Kathmandu

Phone: +977 - 1 - 4261 653, 4362 753, 4258 219

Email: info@ncasc.gov.np

Fax: +977 - 1 - 4215 149

Website: www.ncasc.gov.np



Community and Home Based Care (CHBC) Services in Nepal, 2013

- ✘ Community and Home Based Care (CHBC) responds to the physical, social, emotional and spiritual needs of PLHIV and families from diagnosis to death and bereavement.
- ✘ National package of CHBC service consists of care and support to PLHIV for adherence, nutritional education, hygiene and sanitation, family planning, referral, linking with social services, emotional/spiritual support and counseling, infection prevention, and end of life care.

Some facts about CHBC (2068 Shrawan - 2070 Asar)

Indicators	Total
Number of districts covered by CHBC services	66
Number of PLHIV received CHBC services	9,484
Number of PLHIV referred for ART management	1,343
Number of PLHIV referred for management of opportunity infections	913

Services of Community Care Centre (CCC) in Nepal, 2013

- ✘ CCC is a short-term care homes catering to the needs of PLHIV and serving as a link between the hospital and home/community.
- ✘ The key services by CCC include positive prevention, infection prevention, medical care, nutritional support, treatment literacy for adherence, care and support, and linkage to other social services.

Some facts about CCC (2068 Shrawan - 2070 Asar)

Indicators	Total
Number of CCC sites in Nepal, as of July 2013	36
Number of PLHIV received psycho-social counseling support	1576
Number of PLHIV received nutritional support	1135
Number of PLHIV receiving ART admitted to CCC	1011
Number of PLHIV referred for management of opportunity infections	1417

For Further Information Please Contact:

National Centre for AIDS and STD Control, Teku, Kathmandu

Phone: +977 - 1 - 4261 653, 4362 753, 4258 219

Email: info@ncasc.gov.np

Fax: +977 - 1 - 4215 149

Website: www.ncasc.gov.np